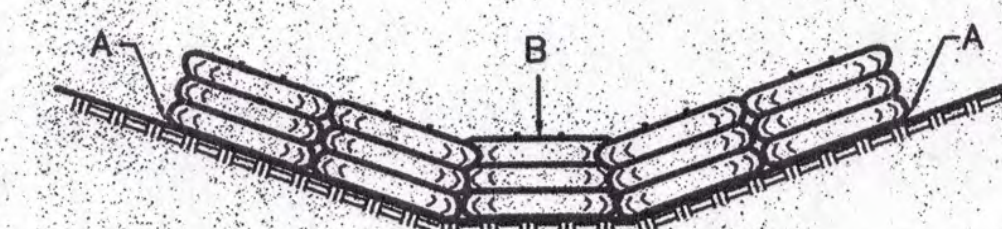


**NOTE:**

1. BALES SHALL BE PLACED IN A ROW WITH ENDS TIGHTLY ABUTTING THE ADJACENT BALES.
2. EACH BALE SHALL BE EMBEDDED IN THE SOIL A MINIMUM OF FOUR INCHES WHERE POSSIBLE.
3. BALES SHALL BE SECURELY ANCHORED IN PLACE BY STAKES OR RE-BARS DRIVEN THROUGH THE BALES.
4. INSPECTIONS BY CONTRACTOR SHALL BE FREQUENT. REPAIRS AND / OR REPLACEMENTS SHALL BE MADE PROMPTLY AS REQUIRED.
5. BALES SHALL BE REMOVED WHEN THEY HAVE SERVED THEIR USEFULNESS SO AS NOT TO IMPEDE FLOW OR DRAINAGE.
6. ACCUMULATED SILT SHALL BE REMOVED WHEN IT REACHES A DEPTH OF NINE INCHES.
7. SILT FENCE CAN BE REMOVED ONCE REVEGETATION HAS OCCURRED.

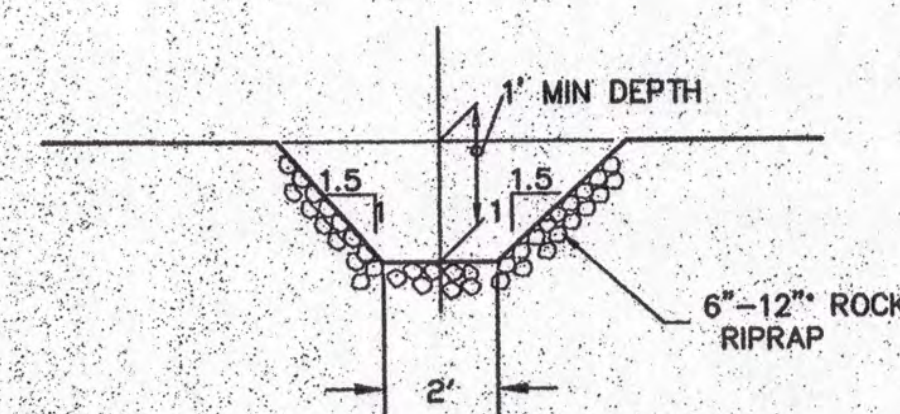
**NOTE:**

BUILDING ENVELOPES SHOWN MAY CHANGE DUE TO FIELD CONDITIONS NOT VISIBLE AT THE TIME THEY WERE ESTABLISHED.

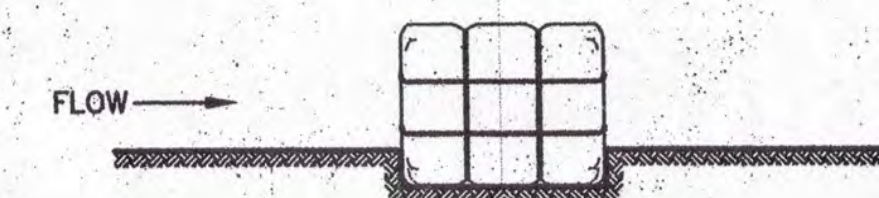


**STRAW BALE CHECK DAM DETAIL**

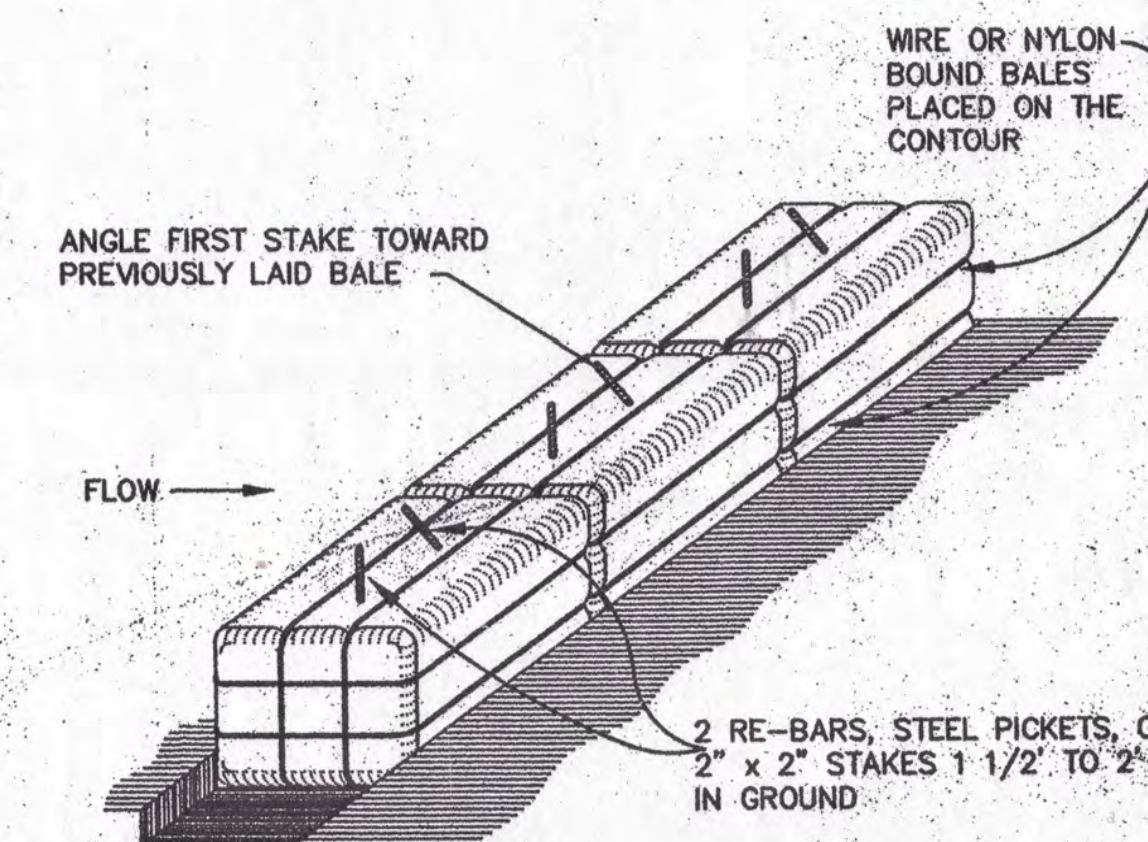
N.T.S.



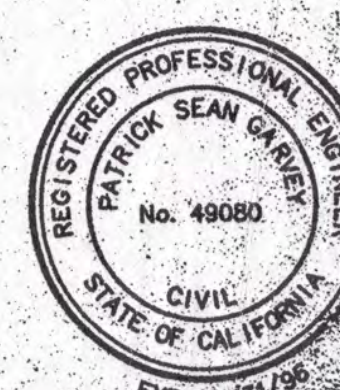
**RIP RAP CHANNEL DETAIL**



**STRAW BALE DIKE DETAIL**



**ANCHORING DETAIL**



DATE: 02/13/97 TIME: 18:43  
SCALE: 1" = 50' T. H.: 8.05  
SERVER: MTS1 SERVICE: ENG  
PATH: N:\MT0320\CS\DRAWING  
DRAWING NAME: EM-EROS.DWG  
PLOT/PRINT VIEW: NONE  
DESIGNER: CAD PROJ. MGR.

**CAUTION:**

The engineer preparing these plans will not be responsible for, or liable for, unauthorized changes to or uses of these plans. All changes to the plans must be in writing and must be approved by the preparer of these plans.

NO.	BY	DATE	REVISIONS
1			
2			
3			
4			
5			
6			
7			
8			
9			
10			



**NOLTE and ASSOCIATES, Inc.**  
Engineers / Planners / Surveyors

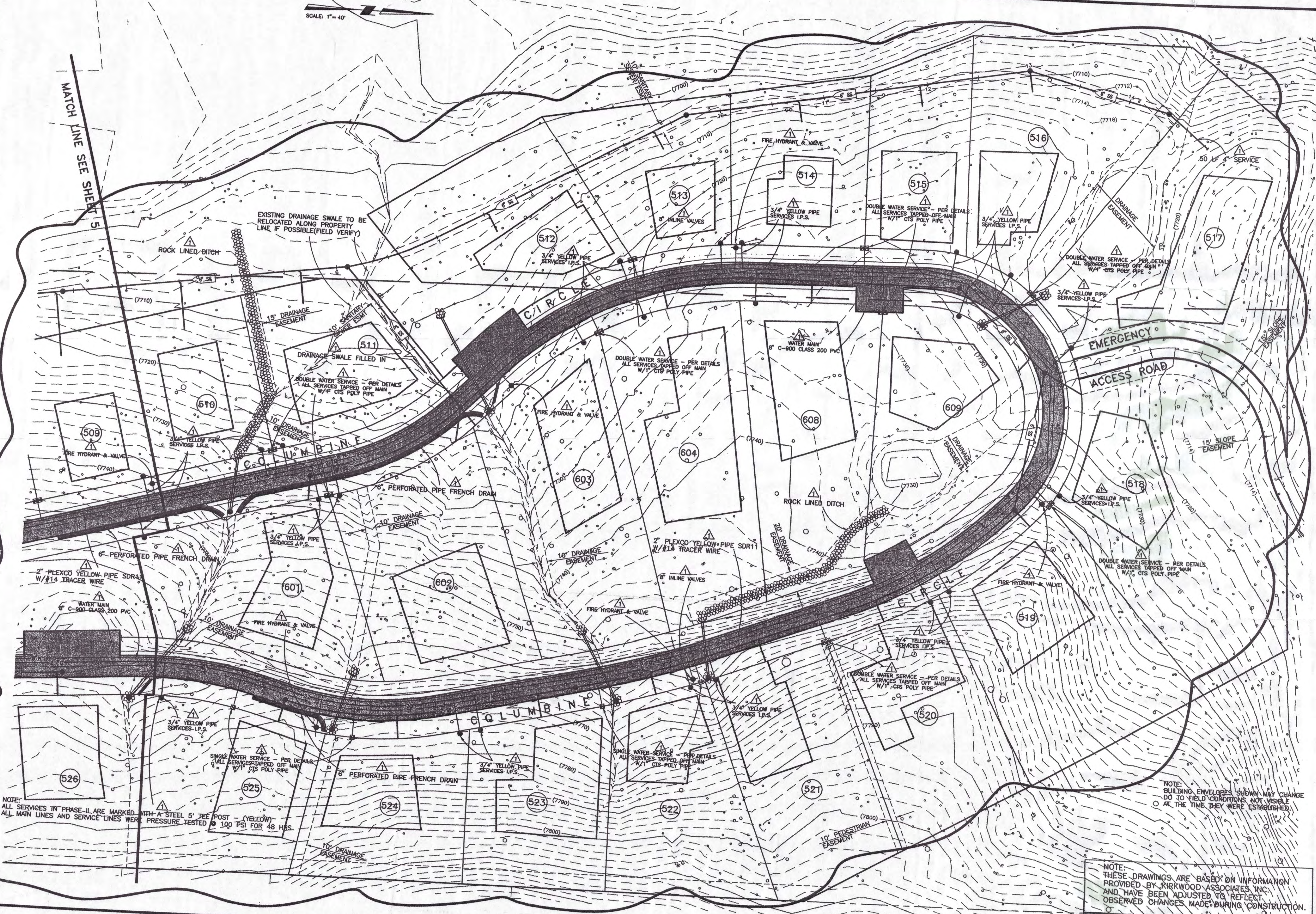
302 Cherry Lane, Suite 201, Manteca, CA 95337

**EAST MEADOWS SUBDIVISION, UNIT NO. 3**  
**EROSION CONTROL PLAN**

SHEET  
**9A**  
OF 9 SHEETS  
JOB NO.  
MT0320EM03

SCALE: 1" = 40'

MATCH LINE SEE SHEET 5



NOTES:  
ALL SERVICES IN PHASE II ARE MARKED WITH A STEEL 5" JEE POST - (YELLOW)  
ALL MAIN LINES AND SERVICE LINES WERE PRESSURE TESTED @ 100 PSI FOR 48 HRS.

NOTE:  
BUILDING ENVELOPES SHOWN MAY CHANGE  
DO TO FIELD CONDITIONS NOT VISIBLE  
AT THE TIME THEY WERE ESTABLISHED.

NOTE:  
THESE DRAWINGS ARE BASED ON INFORMATION  
PROVIDED BY KIRKWOOD ASSOCIATES, INC.  
AND HAVE BEEN ADJUSTED TO REFLECT  
OBSERVED CHANGES MADE DURING CONSTRUCTION.

RECORD DRAWING

EAST MEADOWS SUBDIVISION - PHASE 2

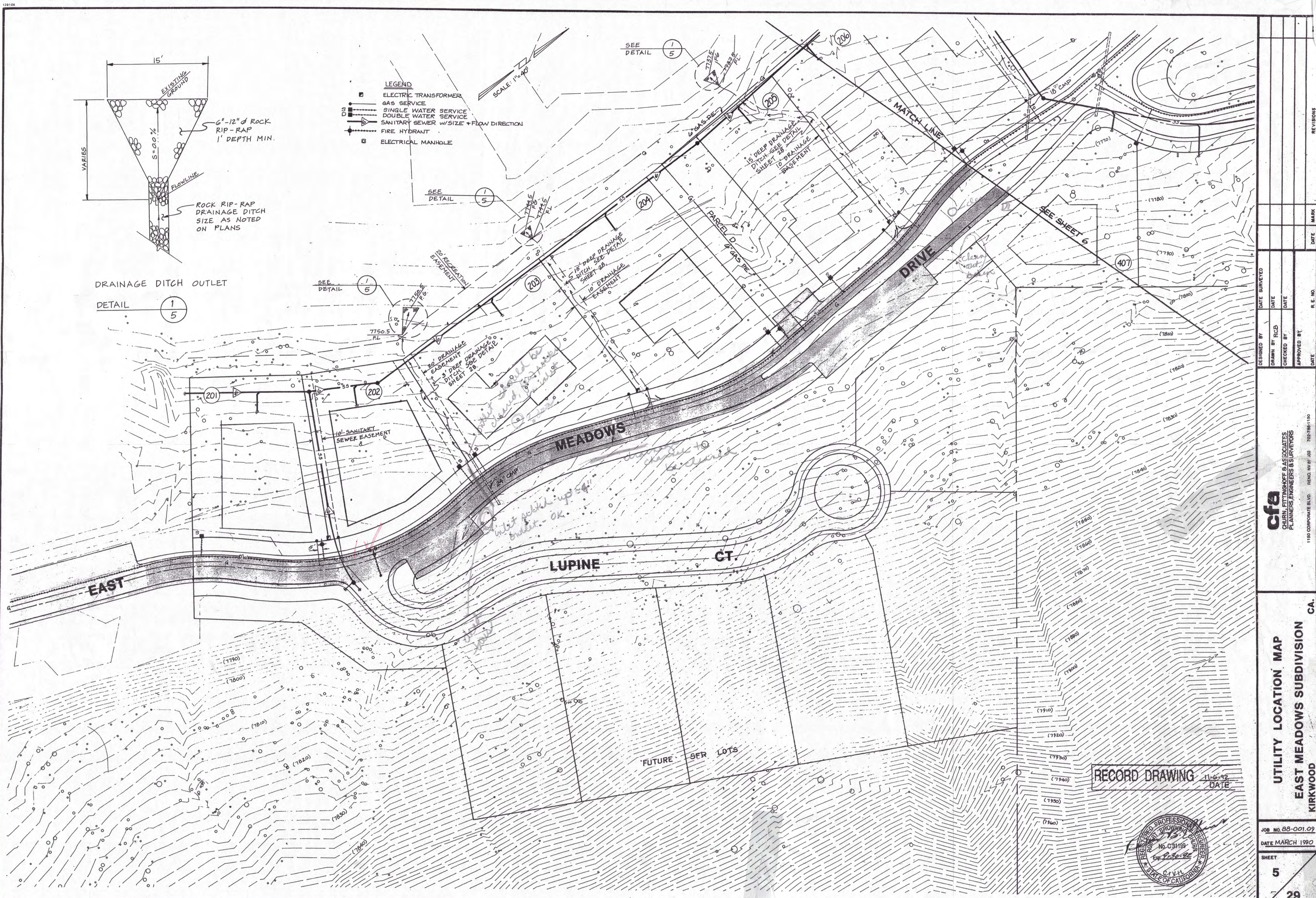
DESIGNED BY	DH	DATE SURVEYED	4/95
DRAWN BY	RCB	DATE	4/95
CHECKED BY	SC	DATE	4/95
APPROVED BY		DATE	
PLANNERS	ENGINEERS	SURVEYORS	
LANDSCAPE ARCHITECTS			
1150 CORPORATE BLVD., RENO, NV 89502	(702) 855-1150	FAX: (702) 855-1150	

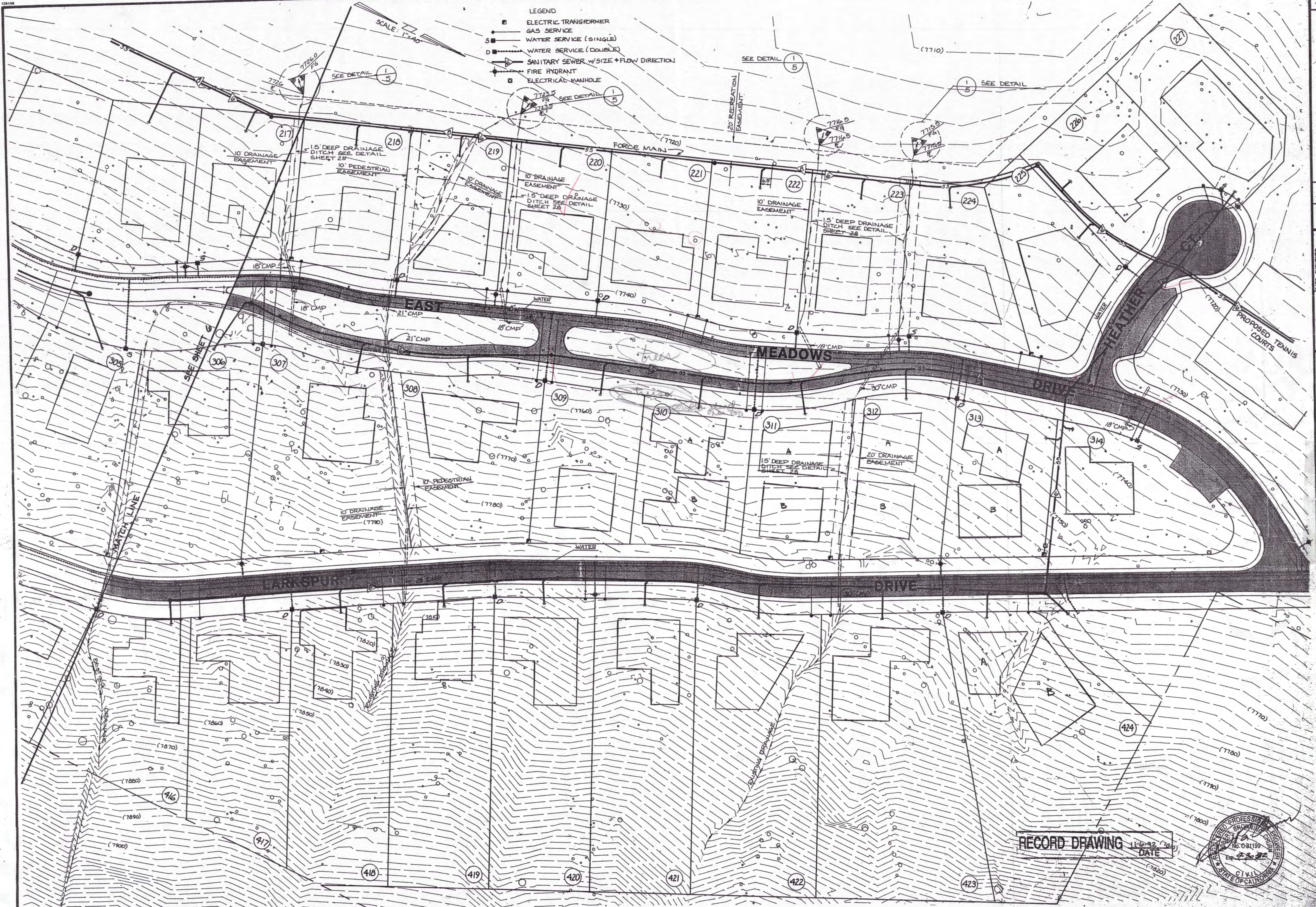
cfa

CONTRACT MAP









DESIGNED BY  
DATE SURVEYED

DRAWN BY  
DATE

CHECKED BY  
DATE

APPROVED BY  
DATE

DATE

DATE

DATE

DATE

REVISIONS

DATE

MARK

1550 CORPORATE BLVD. REV. 04/15/10 705-768-1150

**cfa**  
CAJIN, FITZMAURICE & ASSOCIATES  
PLANNERS, ENGINEERS & SURVEYORS

UTILITY LOCATION MAP  
EAST MEADOWS SUBDIVISION  
KIRKWOOD, CA

JOB NO. 65-001.09  
DATE MARCH 1970  
SHEET 7  
29



RECORD DRAWING 11-6-92 (706)  
DATE 7-30-82